



WEB EDITION

AutoVue Web Edition is the only thin-client, web-based visualization solution on the market capable of delivering industrial strength viewing capabilities to global organizations. Dispersed teams can come together via the web to securely view, review, and collaborate on documents through project extranets, intranets or the Internet.

AutoVue Web Edition is a powerful solution that connects people, information and processes across the global enterprise in a secure, efficient and flexible manner, eliminating communication, geographic and language barriers in the collaboration process.

WHY IS AUTOVUE WEB EDITION RIGHT FOR YOU?

- **Protect Valuable Intellectual Property**

With AutoVue Web Edition, an image of the document is streamed to desktops for viewing; original documents never leave the server, and no local temp file or local cache file of any kind is created in the process. Sensitive information and valuable intellectual property remain protected at all times.

- **Access and View Files through Any Web Browser**

Provide all team members with instant access to any supported document type from any desktop. With AutoVue Web Edition, users are assured uninterrupted access to documents in a truly Web-based solution regardless of their desktop configuration. Users do not require copies of the authoring applications to view documents.

- **Expedite Document Reviews with Real-Time Collaboration Capabilities**

Allow extended global teams to communicate as if they were in the same room. Simultaneously review and markup documents, assign action items, and resolve design issues in real-time within AutoVue. AutoVue's built in real-time collaboration capabilities are available to customers at no additional cost.

- **Easy to Deploy and Maintain**

AutoVue Web Edition is deployed and maintained from a central server making installation and updates a snap for IT departments, as new versions only need to be installed once on the server. AutoVue Web Edition also features automatic versioning when new versions of the software are installed on the server.

VIEW, REVIEW, AND COLLABORATE ON YOUR DOCUMENTS IN A REAL-TIME WEB-BASED ENVIRONMENT

"The ability to access AutoVue through a web browser from anywhere on our network has been incredibly valuable to our business."

David Stein
AMSEC LLC

"AutoVue Web Edition is ideal in terms of support and maintenance since new versions only need to be installed once on the server. This is particularly convenient to keep up with new supported formats and updates, not to mention that it tremendously facilitates the access to AutoVue for casual users."

Lars Fuglsang
Project Manager
Ramboll Denmark

KEY FEATURES AND CAPABILITIES

View Hundreds of Document Types

Open, view and markup any supported document types, via the web, including 3D/2D CAD, EDA, Office, PDF and graphics, without requiring the authoring applications. Visit our website at www.cimmerty.com for a complete list of supported formats.

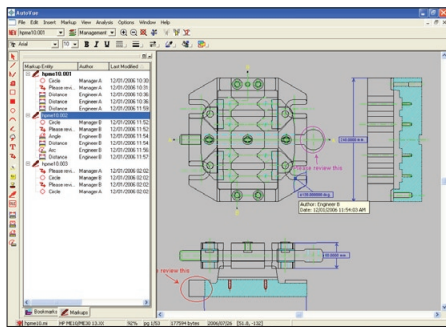
Accelerated Viewing of Complex CAD Files

AutoVue Web Edition ensures optimized performance and high-speed data delivery, especially when dealing with centralized data sources.

Users can begin viewing and working on complex 3D assemblies or multi-page 2D CAD documents after only a fraction of the data has been streamed down.

Markups and Comments

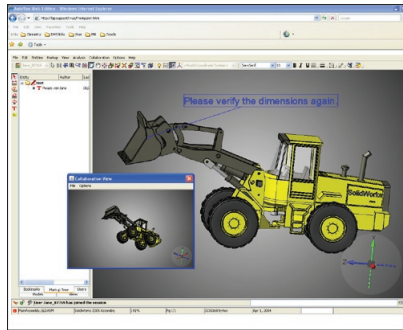
Make it easy to manage and track comments and feedback from all reviewers with AutoVue 3D and 2D markup entities. Click here for a complete list of markup entities.



Real-Time Collaboration

- Initiate real-time collaboration sessions with team members across time zones and allow participants to simultaneously view and markup documents via the Web.
- Enable all participants to create markups without having to pass control to each of them. Control can be granted however to manipulate view of drawing or model that everyone else sees.

- Identify contributors' feedback with color-coded markups and chat. Author information is attached to each markup entity.
- Investigate areas of a document privately during a session using Unlock View.
- Show Tracker Window allows unlocked participants to track the common view in a separate window.



- Pause sessions and resume them at a later time.
- Create an audit trail and capture session information including meeting subject, host of meeting, date and time, participants, full transcript containing the session's events, and complete chat record. Refer back to the minutes of the meeting at any later date.

Enforce Server-Based Privileges and Permissions

Manage and control users' access permission level, and define the user interface capabilities and feature set from the server.

Scalability to Meet the Needs of Extended Enterprise

AutoVue Web Edition was designed to provide for server scalability to support a growing number of users. Simply add servers to accommodate additional users/clients. This can be done on-line, without interrupting service. The load is efficiently balanced across the AutoVue server cluster.

Leverage Existing IT Infrastructure with Easy Integration

Integrated with an existing content management solution, AutoVue Web Edition allows organizations to combine the document management capability of their solution with the efficiency, reliability and security of AutoVue Web Edition native document viewing, markup and collaboration.

Through integration, AutoVue Web Edition provides a comprehensive enterprise visualization platform that makes original documents available to the the entire organization and supply chain in a secure and controlled manner, wherever they may reside.

AutoVue Web Edition can be easily integrated with virtually any DMS/PLM/ERP systems using:

- Cimmerty's out-of-the-box VueLink solutions (SAP, Documentum, MatrixOne, SharePoint)
- Cimmerty's Integration SDK

Visit our website at www.cimmerty.com to learn more about AutoVue's integration capabilities.

Call Impac to receive a fully functional demonstration copy



3200 Wilcrest Drive, Suite 370
Houston, Texas 77042

(713) 784-3500